



# SHARING THE ROAD SAFELY

RULES EVERYONE SHOULD FOLLOW



Montréal



Société de l'assurance  
automobile  
Québec



# DUTY OF CARE IN THE HIGHWAY SAFETY CODE

---

*All road users have a duty, especially toward more vulnerable users, to be careful and considerate when travelling on a public highway.*

*Drivers of road vehicles have a duty to show extra care for more vulnerable users such as pedestrians, cyclists and mobility impaired persons.*

*Vulnerable users, for their part, have a duty to adopt behaviours that enhance their own safety.*







# TRAFFIC LIGHTS

## STOPPING AT A RED LIGHT 1

When you are facing a red light, you must stop before the pedestrian crosswalk or the stop-line or, if none, before the near side of the roadway. This rule is important because it allows pedestrians to cross the roadway safely.

**Fine** > \$100 and 3 demerit points

## STOPPING IN A BIKE BOX 2

A bike box is a designated area for cyclists; it provides cyclists with a safe way to get ahead of vehicles stopped at a red light.

When there is a bike box on the road, you must stop your vehicle behind the stop-line located behind the bike box. When the traffic light turns green, you must wait until the bike box is clear before proceeding.

**Fine** > \$100 and 3 demerit points

## YELLOW LIGHT

When the traffic light turns yellow, you must stop your vehicle unless you have already entered the intersection or are so close to the intersection that it would be impossible to stop your vehicle before the stop-line.

**Fine** > \$100

## FLASHING RED LIGHTS

When the red traffic light is flashing, you must stop your vehicle. It is equivalent to a stop sign.

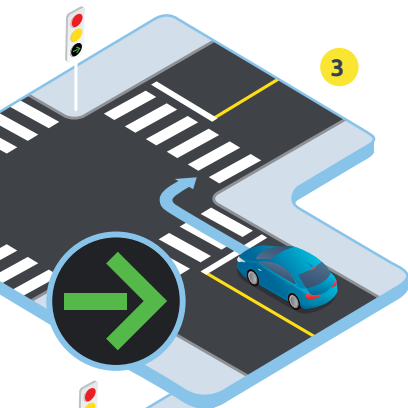
**Fine** > \$100 and 3 demerit points







# TRAFFIC LIGHTS



## GREEN ARROW 3

If there is a green arrow, the motorist must proceed in the direction of the arrow.

**Fine** > \$100



## TURN AT AN INTERSECTION 4

As long as the arrow is vertical, wait before turning, even if there are no pedestrians.

Once the traffic light has turned into a green light or the horizontal arrow appears, you can turn, yielding to vulnerable users.

**Fine** > \$100

## TRAFFIC LIGHTS NOT WORKING

When the traffic lights are off due to a power failure, for example, you are required to stop your vehicle as if you were coming to a stop sign.

**Fine** > \$100



## BLOCKING AN INTERSECTION

Even if the traffic light is green, you must make sure there is enough room to completely cross the intersection before proceeding.

Until there is enough room, you must remain behind the stop-line or pedestrian crosswalk so that you can be legally stopped if the traffic light turns red.

If you block the intersection with your vehicle:

- you force pedestrians to cross the street between vehicles,
- motorists travelling in the other direction cannot cross the intersection,
- you may cause a traffic jam.

**Fine > \$60**



## TURNING

### YIELDING TO PEDESTRIANS AND CYCLISTS

At intersections, you must yield to pedestrians and cyclists when you are turning. In concrete terms, this means that you must:

- check your rearview mirror and your blind spots before you make your turn,
- decide whether you have time to turn without compromising the safety or movement of pedestrians and cyclists.

**Note** > It doesn't matter if you get to the intersection before a pedestrian or cyclist: you must give them the right of way.

**Fine** > \$100 and 2 demerit points



## SHARING THE ROAD WITH CYCLISTS

At an intersection, as long as the traffic light is green, cyclists may proceed; They don't have to stop in front of a pedestrian crossing light represented by a steady orange hand. You must take this into account when you are making a turn.



## OTHER TRAFFIC RULES

### TURNING AT AN INTERSECTION 5

To make a right turn, you must:

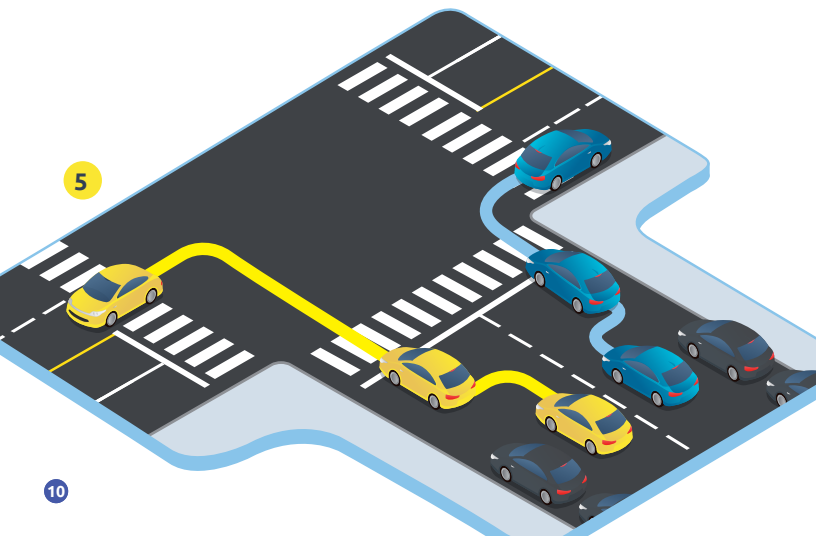
- move into the far right lane or the turning lane.
- make a sharp turn and do not enter the left or centre lanes of the roadway you are turning onto.

**Fine** > \$100

To make a left turn, you must:

- move into the far left side of the roadway,
- make a sharp turn, enter the roadway to the right and as close as possible to the center line.

**Fine** > \$100



### Turning right when there is a bus at a bus stop 6

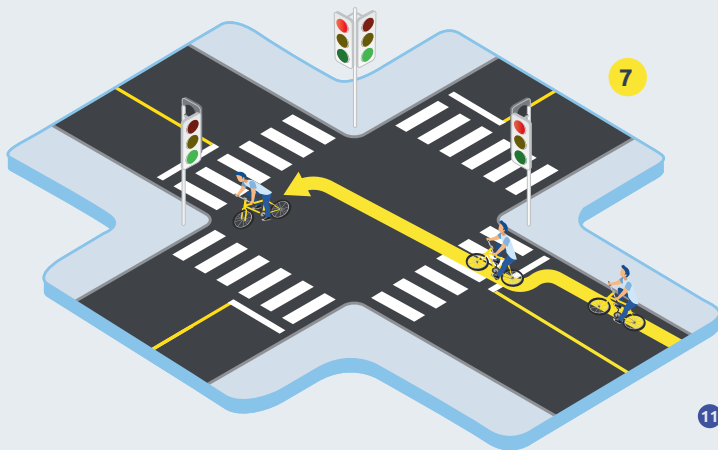
You cannot make a turn in front of a bus that is stopped at a bus stop to receive or discharge passengers. You must wait for it to leave the stop before making your turn.

**Fine** > \$100



### Left turn by a cyclist at an intersection 7

Cyclists are allowed to turn left at an intersection, the same way as motorists do.



## OTHER TRAFFIC RULES

### DOORING

Before you open your door:

- make sure it's safe to open your door: check for cyclists or any other type of vulnerable road users who are approaching your vehicle,
- check your rearview mirror and shoulder check before you open your door,
- be sure your passengers check too.

**Fine** > \$200



### PASSING A CYCLIST 8

If you are about to pass a cyclist travelling in the same lane as you are, you must:

- reduce your speed,
- maintain a reasonable distance between your vehicle and the bicycle while passing.

This reasonable distance is 1 metre where the speed limit is 50 km/h or less and 1.5 metres where the speed limit is more than 50 km/h.

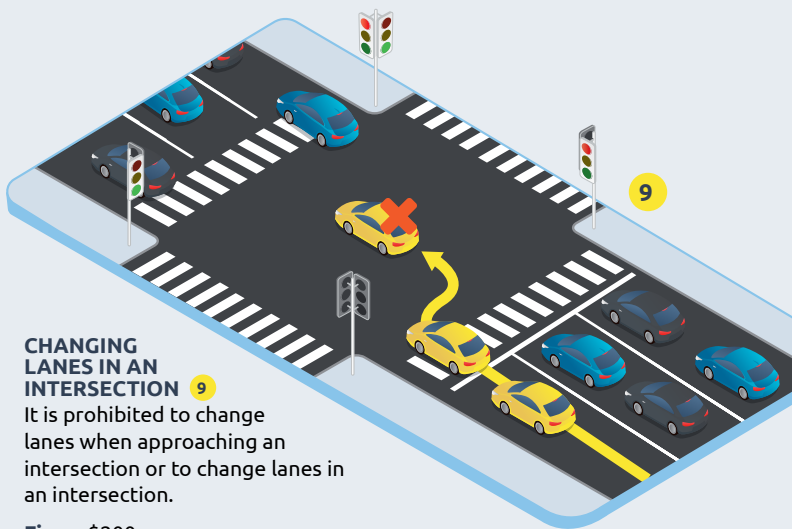
Motorists are allowed to cross a single or double line to pass the cyclist, providing it can be done safely.

**Fine** > \$200 and 2 demerit points

#### Additional information

- Cyclists are not required to use cycle lanes.
- Under overpasses, cyclists may ride on the road or the sidewalk. If they choose the second option, there must be signage indicating that they can use the sidewalk.





## CHANGING LANES IN AN INTERSECTION

9

It is prohibited to change lanes when approaching an intersection or to change lanes in an intersection.

**Fine** > \$200

## USING THE HORN

A vehicle's horn may only be used when necessary, especially to warn another user of a danger that could cause a collision. It cannot be used to:

- show your frustration with another user:
- let someone know that you have arrived.

Using the horn may result in unintended manoeuvres by other users, particularly cyclists and pedestrians. The horn must only be used when there is imminent danger.

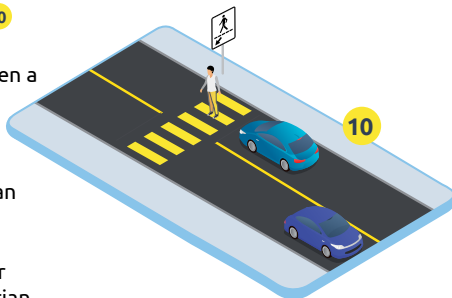
**Fine** > \$100

## OTHER TRAFFIC RULES

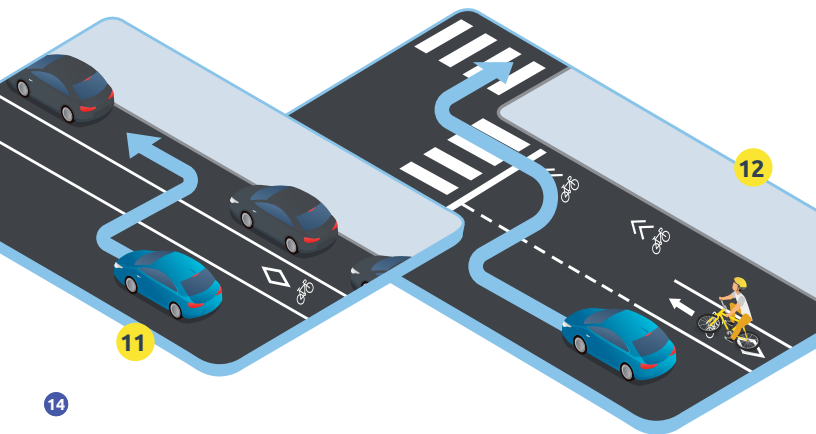
### PEDESTRIANS HAVE THE PRIORITY AT CROSSWALKS 10

When you come to a pedestrian crosswalk, stop your vehicle when a pedestrian:

- is crossing,
- clearly demonstrates the intention to enter a pedestrian crosswalk (eye contact, hand gesture, stepping off the sidewalk), you must stop your vehicle and allow the pedestrian to cross.



**Fine** > \$100



11

## COMPLIANCE WITH CYCLE LANE RULES

### Parking in a cycle lane

It is prohibited to park or stop in a cycle lane.

**Fine** > \$100

However, drivers are allowed to cross the solid lines separating the cycle lane to park in a parking space, to access a private property or the public road from a private lot, providing it can be done safely. **11**

### Driving in a cycle lane

It is prohibited to drive a motor vehicle in a cycle lane.

**Fine** > \$100

## SPECIAL CASES

### Turning right at an intersection **12**

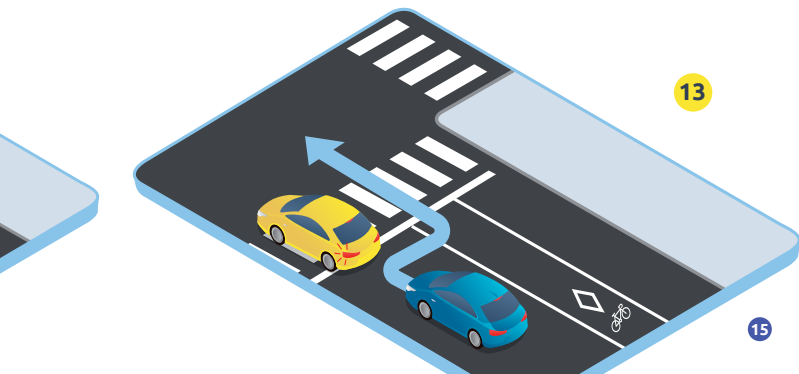
Right turns should be made where the cycle lane markings change from a solid line to a dotted line.

**Fine** > \$200 and 3 demerit points

### Lane blocked by a vehicle **13**

If the lane in which you are driving is blocked by a vehicle that is about to turn left, it is prohibited to pass the vehicle on the right if this manoeuvre requires you to drive in a cycle lane.

**Fine** > \$100



## OTHER TRAFFIC RULES

### U-TURNS 15

- U-turns are only allowed where there are no signs prohibiting them, and the U-turn can be performed safely.

**Fine** > \$100 if there is a No U-turn sign.

- It is prohibited to cross a solid line to make a U-turn.

**Fine** > \$200 for crossing a solid line and 3 demerit points.

### CHANGING DIRECTION 16 (Montréal municipal by-law)\*

It is prohibited to change direction on a public road when entering or backing into a back lane or lowered sidewalk.

**Fine** > \$100

### DRIVING IN REVERSE (Montréal municipal by-law)\*

- It is prohibited to drive more than 30 metres in reverse.
- It is prohibited to drive in reverse through any part of an intersection, regardless of the distance.

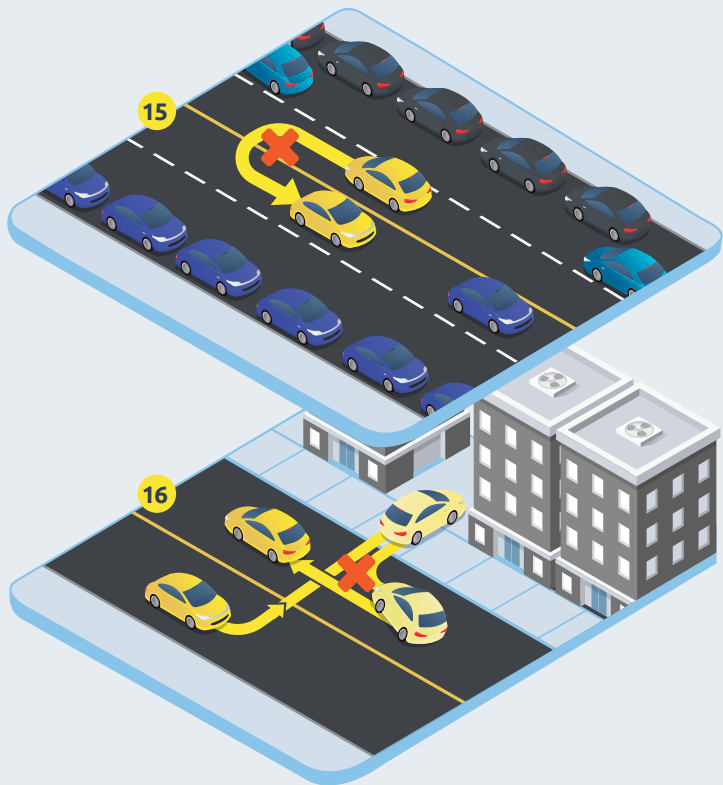
**Fine** > \$30

### DRIVING IN A BACK LANE (Montréal municipal by-law)\*

It is prohibited to drive in a back lane for the sole purpose of driving from one street to another.

**Fine** > \$100

\* **Note** > Montréal municipal by-laws apply only in Ville de Montréal boroughs. For neighbouring municipalities, check the applicable by-laws in each municipality.





**RULES**  
FOR  
**CYCLISTS**

## RIDE ON THE RIGHT-HAND SIDE OF THE ROAD AND WITH THE TRAFFIC

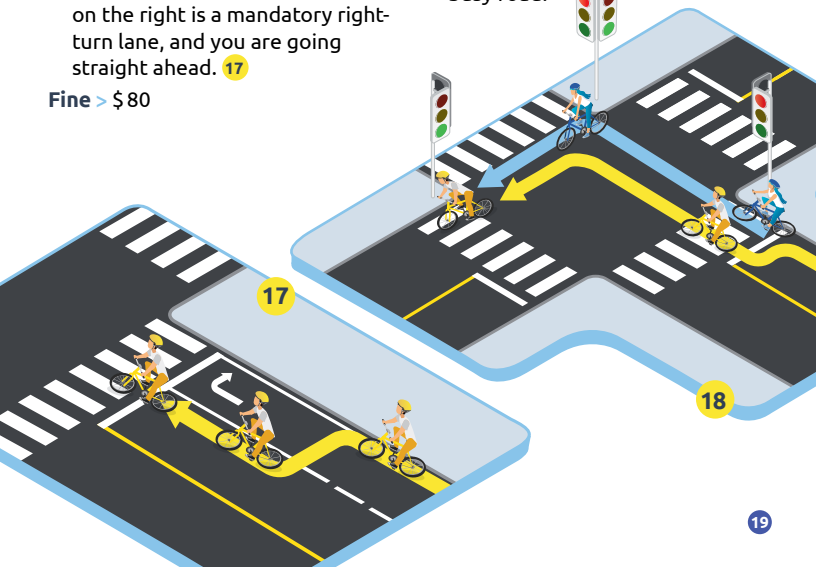
- You must ride as close as possible to the curb or the right side of the roadway, taking into account the condition of the road and the risk of dooring.
- Unless otherwise posted, you must ride in the same direction as the traffic.
- It is prohibited to ride between contiguous lanes unless the lane on the right is a mandatory right-turn lane, and you are going straight ahead. 17

Fine > \$ 80

## LEFT TURNS 18

Two types of left turns are allowed:

- Like a vehicle, cyclists move into the left of the intersection and make their turn.
- Like pedestrians, cyclists make a box turn left. This is the safest way to turn on a busy road.



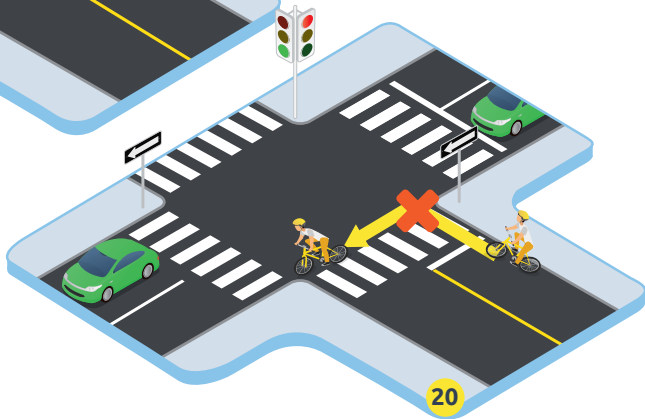
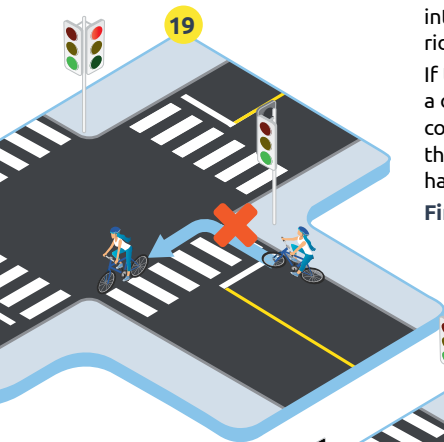


## ILLEGAL TURN

At a red light, cyclists cannot turn their bike to the left to face the green light and cross the intersection because they will be riding against the flow of traffic. **19**

If they turn their bike to the left at a one-way street, they will also be committing an infraction because they will not be riding on the right-hand side of the roadway. **20**

**Fine > \$ 80**





## PEDESTRIAN LIGHTS

Since April 18, 2019, unless otherwise indicated, at a red light, cyclists may move ahead if the white walking signal is displayed. However, they must stop before moving ahead. They must also yield to pedestrians. Failure to stop and yield to pedestrians is an infraction.

**Fine** > \$ 80

## RIGHT TURN ON A RED LIGHT

Cyclists cannot turn right on a red light on the Island of Montréal.

**Fine** > \$ 80

## RIDING ON THE SIDEWALK

Cyclists cannot ride on the sidewalk, unless otherwise authorized by a sign. Cyclist must then:

- ride at a reasonable and prudent speed,
- yield to pedestrians.

**Fine** > \$ 80



## BICYCLE TRAFFIC LIGHTS

Cyclists must obey bicycle traffic control lights. They take priority over all other traffic control devices. Therefore, if the bicycle traffic lights is red and the traffic light is green, you cannot proceed.

**Fine** > \$ 80



## RIDING IN A RESERVED BUS LANE 21

Cyclist cannot ride in a reserved bus lane, unless otherwise authorized by a sign.

**Fine** > \$ 80

**Note** > Because they are required to ride on the right side of the road and cannot move between two rows of vehicles travelling in contiguous lanes, cyclists must use a parallel street.

## CELL PHONE AND EARPHONES

### Earphones

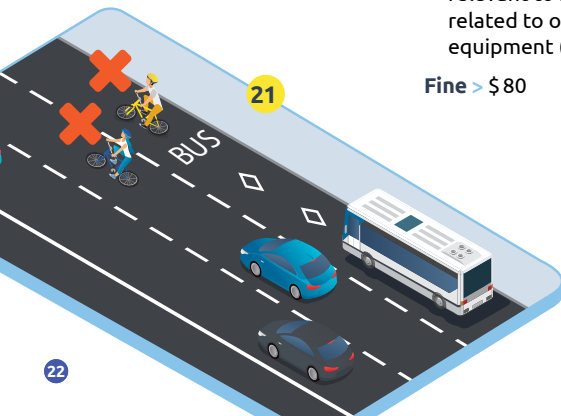
Cyclist cannot wear any earphones.

### Cell phone

All cyclists are prohibited from using a cellular phone or any other portable device designed to transmit or receive information or for entertainment purposes, or use a display screen, except when :

- mounted on the bicycle;
- and
- it only displays information relevant to riding the bike or related to operating its usual equipment (e.g. GPS).

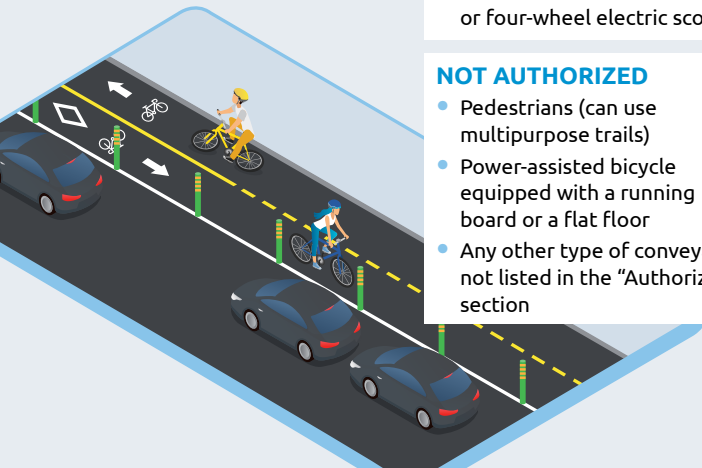
**Fine** > \$ 80





## CYCLE PATHS

Cycle paths physically separated from other lanes of traffic by a concrete or green mall, delineators, bollards, etc., or on a site separate from the roadway.



## ON THE ISLAND OF MONTRÉAL

### AUTHORIZED

- Bicycle
- Power-assisted bicycle not equipped with a running board or a flat floor
- Skateboard
- In-line skates
- Motorized or non-motorized wheelchair
- Three-wheel electric scooter or four-wheel electric scooter

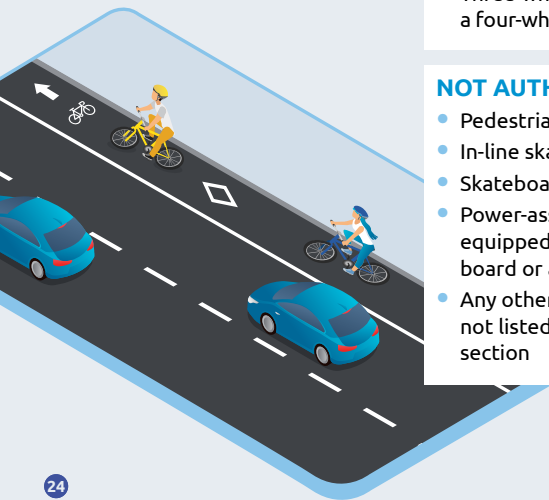
### NOT AUTHORIZED

- Pedestrians (can use multipurpose trails)
- Power-assisted bicycle equipped with a running board or a flat floor
- Any other type of conveyance not listed in the “Authorized” section



## CYCLE LANES

Cycle lane refers to a lane reserved for cyclists on a roadway, which can be one-way or two-way.



## ON THE ISLAND OF MONTRÉAL

### AUTHORIZED

- Bicycle
- Power-assisted bicycle not equipped with a running board or a flat floor
- Motorized or non-motorized wheelchair
- Three-wheel electric scooter or a four-wheel electric scooter

### NOT AUTHORIZED

- Pedestrians
- In-line skates
- Skateboard
- Power-assisted bicycle equipped with a running board or a flat floor
- Any other type of conveyance not listed in the “Authorized” section



# **RULES** **FOR** **PEDESTRIANS**



## PEDESTRIAN LIGHTS

Pedestrians must obey pedestrian lights. They take priority over all other traffic control devices.



### CROSS

Look both ways. Watch out for vehicles that are turning. Cross.



### WARNING - Flashing orange hand

If you have already started to cross, complete your crossing. If the hand is flashing and there is no countdown timer, you must not start crossing the street.



### STOP

When the solid red hand is displayed, do not cross.

**Fine** > \$15



### COUNTDOWN

See how much time is left. Only cross if you have enough time to get to the other sidewalk. If the countdown is at zero, do not cross.

**Fine** > \$15

## CROSSING THE STREET

When there is an intersection or a pedestrian crosswalk nearby, you must only cross the street at these places. **22**

If there are no clearly identified intersections or crosswalks nearby, you must yield to vehicles and cyclists before crossing.

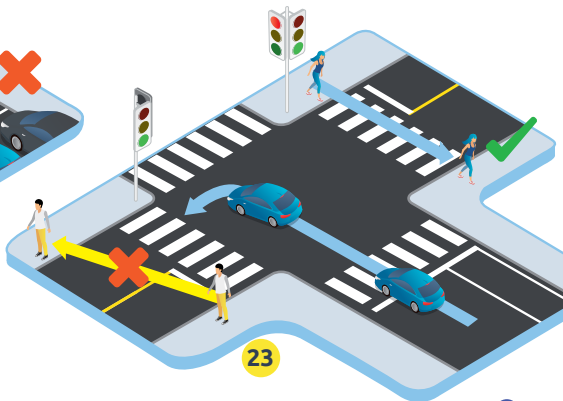


As a pedestrian, you are required to cross perpendicular to the road, whether you are crossing at an intersection or mid-block.

You are not allowed to cross a street diagonally, unless otherwise authorized by a sign. **23**

**Note** > When you cross diagonally, motorists will only see you at the last moment when they are turning at an intersection.

**Fine** > \$15





**Design:**

Service de police de la Ville  
de Montréal – Road Safety  
Section